

VINYL POST WRAPS



The Perfect Solution for Covering Pre-Existing Wood Support Posts!

- Ideal for:
 - Protection Against The Elements
 - Hiding Old Discolored & Splintered Wood Posts
 - Complementing Your Deck and Railing System
- Will Not React with ACQ Wood Treatment
- Easy Retrofit

Standard Post Wrap Sizes:

4" x 4" Post Wraps Available in 96" & 108" Lengths
 6" x 6" Post Wraps Available in 96" & 108" Lengths



Adjustable Post Wrap Sizes:

4" x 4" Available in 96" & 120" Lengths
 6" x 6" Available in 96" & 120" Lengths
 8" x 8" & 10" x 10" Available in 120" Length

Adjustable Inside Dimensions:

4" x 4" Adjusts from 3.25" - 4.25" 8" x 8" Adjusts from 7.25" - 8.25"
 6" x 6" Adjusts from 5" - 5.75" 10" x 10" Adjusts from 9.25" - 10.25"



Detail of Adjustable Post Wrap Ratcheting System
 Adjustable in 1/8" Increments

Fairway Dealer Order #MLB008 Version 1.3



Vinyl Systems

www.fairwayvinyl.com

Posts & Columns



Limited Lifetime Warranty

NEWEL POSTS



4" x 4" x 38" or 54"
 Colonial Turned Newel Post



6" x 6" x 38" or 54"
 Legends Turned Newel Post



6" x 6" x 38" or 54"
 Legends Recessed Panel Newel Post



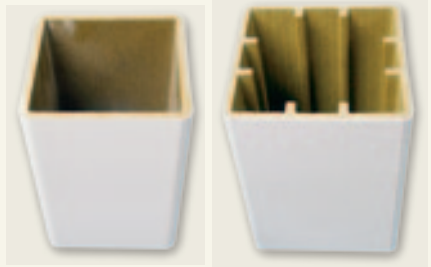
8" x 8" x 38" or 54"
 Masters Recessed Panel Newel Post



8" x 8" x 38" or 54"
 Masters Square Newel Post

POST SLEEVES

Composite Post Sleeves - Available in 2 Sizes & 2 Lengths
 4.25" x 4.25" Post Sleeves Available in 39" & 108" Lengths
 5" x 5" Post Sleeves Available in 39" & 108" Lengths



SLEEVES OVER 4" x 4" WOOD POST!

Vinyl Post Sleeves - Available in 4 Sizes & 5 Lengths
 4" x 4" Post Sleeves Available in 39", 48", 96" & 108" Lengths
 5" x 5" Post Sleeves Available in 48" & 96" Lengths
 6.5" x 6.5" x 108" Post Sleeves Also Available Up To 24"
 8" x 8" x 120" Post Sleeves



STRUCTURAL POSTS



- A - 4" x 4" x 42" Standard Structural Post
- B - 6" x 6" x 37" or 43" Legends Structural Post Mount w/spacers
- C - 8" x 8" x 37" Masters Structural Post Mount
- D - 4" x 4" x 42" Leveling Structural Post
- E - 5" x 5" Spacer Block Kit for 4" x 4" Structural Posts
- F - Joist Bracket for Structural Posts

POST ACCENTS



- A - 4" to 5" Decorative Transition Adapter
- B - 4" Newport Cap
- C - 4" Decorative Knuckle
- D - 4" Decorative Knuckle w/Spacer

STRUCTURAL VINYL PORCH POSTS



108" Length • 5 Styles • 3 Sizes

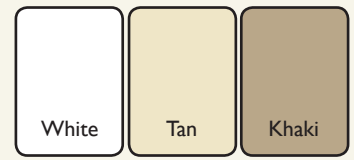
Mounting Uplift Plates & Hardware Included

Provides Uplift Protection

Matches Accessories & Railing

Average Ultimate Performance Test Results:

- 4" x 4" Post - Axial Load: 7,883 lbs. • Mounting Uplift Plate Load: 1,637 lbs.
- 5" x 5" Post - Axial Load: 11,571 lbs. • Mounting Uplift Plate Load: 1,854 lbs.
- 6" x 6" Post - Axial Load: 20,711 lbs. • Mounting Uplift Plate Load: 1,303 lbs.



Visual Representations may Vary from Actual Colors

PORCH POST ACCESSORIES & COMPONENTS



Gingerbread Scroll
(12.25" x 10.375" x 1")



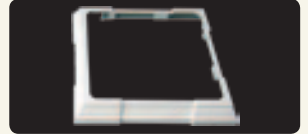
Rose Scrolls
(3 Sizes: 8" x 10" • 9" x 18" • 22" x 22")



Cross Section View
4" x 4" & 5" x 5" Porch Posts
Full length extruded aluminum center insert with stainless steel keepers.



Mounting Uplift Plates
For 4" x 4" & 5" x 5" Porch Posts
Top, bottom plates and hardware included. Easy and convenient slide and twist action for new or existing porch post applications.



Base Trim Ring
Accent or cover for a clean finished look. Universal "one size fits all" vinyl base trim ring for porch posts and post wraps.



Storm Kit Plate System



Lamp Posts
Available in Colonial & Traditional Post Designs

VINYL COLUMNS



White

Easy to Handle & Work With:

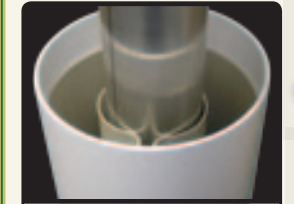
- Lightweight Material
- Easy Cut Height Adjustments
- Low Maintenance
- Quick Installation
- Never Needs Painting, No Splinters
- Will Not Rot, Crack, Peel or Yellow
- Stylish, Elegant & Durable

Cast Aluminum Brackets:

- Tabbed Mounting Brackets
- Provides Uplift Protection
- Designed to Keep Loads Centered

Cap, Base & Accent Ring Kit:

- Mounting Screws Included
- No Exposed Screws



Cut away view of internal structural support system



Average Ultimate Performance Test Results:

- 8" Column - Axial Load: 19,500 lbs.
Mounting Uplift Plate Load: 1,585 lbs.
- 10" Column - Axial Load: 18,417 lbs.
Mounting Uplift Plate Load: 1,600 lbs.

MOUNTING PLATES INCLUDED WITH COLUMN

Cap, Base & Accent Trim Ring Kit

